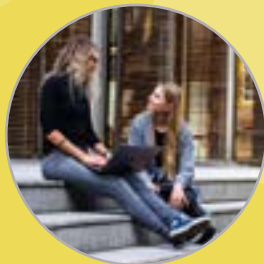




Ruskin College
Oxford

Social Work BA (Hons)



Course Booklet



91%
STUDENT
SATISFACTION

More than
80%
in social work
jobs within
6 months



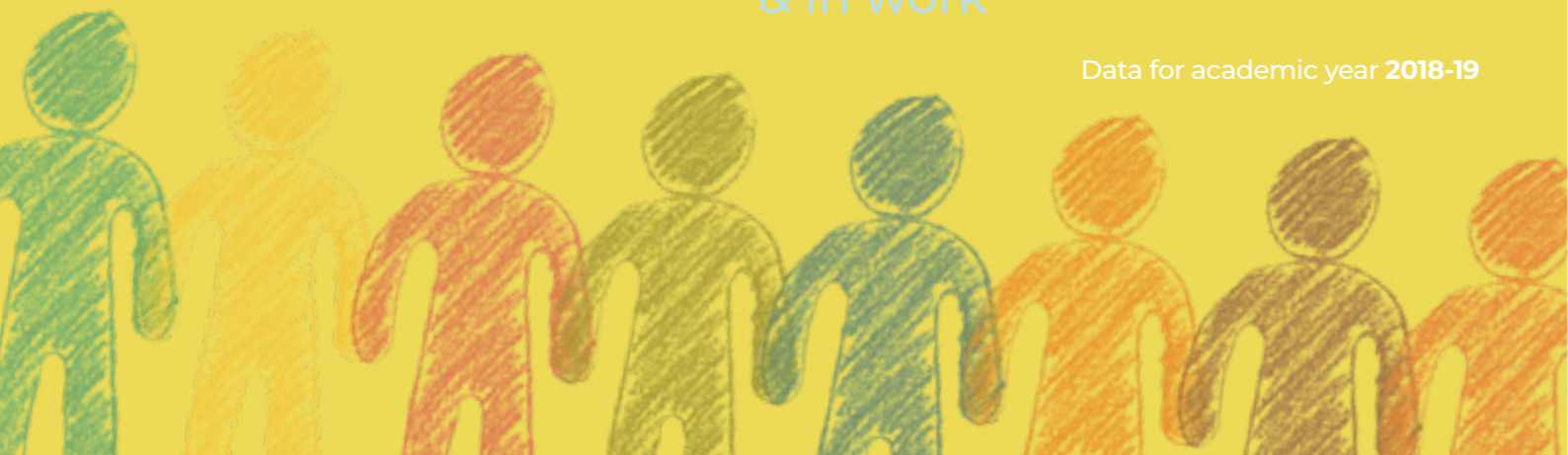
41%
BAME
students

39%
DISABILITY



more than
20
qualified
& in work
YOUTH & SOCIAL WORKERS

Data for academic year 2018-19



SOCIAL WORK BA (HONS)

Duration: 3 years full-time / 4 years part-time

Validation: The Open University

On this popular degree course, with a practical focus, you will develop your professional skills and knowledge as you work towards a recognised SWE professional social work qualification, experiencing first-hand the challenges and rapidly changing patterns of social work provision today.

You will learn how to care for others and understand their specific needs and requirements, while also developing your organisational and essay writing skills. You will enjoy the practical focus, with the opportunity to learn inside and outside of the classroom, with a combined college and placement learning experience.

Who is it for?

Are you keen to care for people in need and to give a better life to those experiencing social disadvantages? If you have a strong commitment to the empowerment of individuals and communities, and the contribution that social work can make, then this is the programme for you.

What do I need?

There are no Level 3 academic entry requirements, but you will need GCSE English at Grade C (4) or above.

Why Ruskin?

Ruskin has a remarkable history of supporting those disadvantaged in society, alongside a reputation for excellence in the social sciences. You will study in a challenging and supportive learning environment with a small group approach, which really focuses on you.

The majority of our graduates gain social work positions or pursue relevant postgraduate studies.

What does it cover?

Year 1:

- Sociology
- Law for Social Workers
- Applied Psychology
- Human Growth and Development
- Social Policy
- Welfare Rights
- Principles and Practice of Social Work

Year 2:

- Placement 1
- Research and Social Work
- Principles and Practice of Social Work and Law

Year 3:

- Placement 2
- Final Dissertation



How will I learn and be assessed?

You will enjoy a wide range of teaching and learning methods, enhanced by small group tutorials and integrated with two work placements. You will benefit from our close partnerships with local social work programmes and Oxfordshire County Council, offering high quality placements.

You will be assessed through written work, assignments and presentations.

What jobs could it lead to?

You will have a variety of exciting career path options, including Social Work, Youth and Community Work, Drug and Alcohol Support, work with the elderly and disabled, work in charities and hospices, family support, community liaison and housing/welfare.

Previous students have enjoyed a more than 80% social work employment success rate within 6 months of graduating.

What does it cost?

£9,000 per year full-time, £6,750 per year part-time (not including enhanced DBS check for work placement).

“An excellent institution for learning, highly qualified tutors, a positive experience.”

“The tutors are exceptionally supportive and very knowledgeable.”

“The experience was amazing. Everyone is friendly and supportive and the group style learning will help us become better Social Workers.”

Ruskin College
Ruskin Hall
Dunstan Road
Old Headington
Oxford OX3 9BZ

Tel: +44 (0) 1865 759600
Email: enquiries@ruskin.ac.uk
Website: www.ruskin.ac.uk

